

NEWSLETTER

PRESIDENT

Professor David Russell-Jones

COMMITTEE

Chair

Brian Davey

bandcdavey@outlook.com

07796 185555

Vice Chair

Geoff Woolley

01483 828499

g.woolley4@ntlworld.com

Secretary

Lesley Taylor

01483 416968

lesleyjtaylor16@gmail.com

Treasurer

Carol Davey

bandcdavey@outlook.com

MEMBERS:

Ian Allen

John Goodridge

Julie Grist

Roy Johnson

Daphne Millar

Pat Millar

Allan Williams

Janet Williams

From the Chair

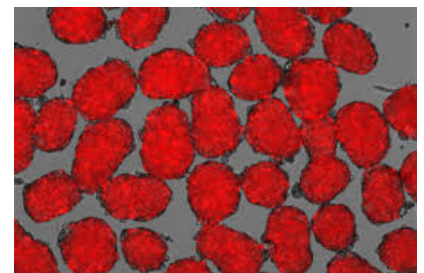
In spite of not being able to fundraise in our normal way we have been able to give £500 to the Diabetes UK Research Project on turning stem cells into beta cells. See below for more details. Our next meeting will be a talk on Diabetic Retinopathy followed by our AGM. We hope to see you on Zoom for that. And see below for details of the next Carshalton Group talk. They are happy for us to join them.

Kind regards
Brian

Diabetes UK Research project - Turning stem cells into beta cells

Project summary

In diabetes, insulin-producing beta cells are destroyed or stop working properly. New beta cells can be made in a lab, and Dr Hill wants to find ways to improve this process. This could help scientists to improve the effectiveness of islet cell transplants to treat Type 1 and 2 diabetes.



Research aims

Dr Hill, the Research Team leader, will look at ways to produce fully working beta cells from stem cells. In the body, beta cells are surrounded by a supportive structure that's known as an extracellular matrix. Dr Hill and her team will use a different type of matrix (taken from a mouse pancreas), to see if this can support the stem cells to turn into functioning beta cells. They will then transplant the new beta cells into mice, to see if they could potentially be used to treat Type 1 diabetes.

Potential benefit to people with diabetes

If the best method can be established to create fully functioning beta cells, it could lead to more successful islet transplants to treat Type 1 diabetes. Producing an unlimited supply of beta cells in the lab opens up exciting treatment strategies for Type 1 and Type 2 diabetes in the future.



We are now
also on
Facebook
at Diabetes
UK Guildford
and SW
Surrey Group

And on Twitter at [@diabetes_sw](https://twitter.com/diabetes_sw)

Meetings are normally held on the first Monday of February, April, June, October and December.

Our normal venue for meetings is CEDAR, the Centre for Endocrinology, Diabetes and Research, at the Royal Surrey County Hospital.

Meetings start at 7.30pm but tea and coffee are available a bit earlier.

There are a number of parking places for blue badge holders right at the back of CEDAR. But we also have agreement to park in the staff car park between 7.30pm and 10pm. Or you can park in the pay and display visitors car park.

Do you have email?
Send me an email and you can have this Newsletter that way.
See below

Julie Grist, Editor
Holmbury
Wheeler Lane,
Witley, Surrey
GU8 5QU
or email
juliegrist9@gmail.com

SUTTON & CARSHALTON DIABETES UK GROUP

Thursday 24th March at 7:00 pm on Zoom.

All about Eyes - a talk followed by Question & Answer Session by Associate Prof. Dawn Sim

Dawn is a consultant ophthalmic surgeon specialising in Cataract and Retina at Moorfields Eye Hospital, and a former chief resident and current clinical lead for diabetic screening there. She has a PhD from the UCL Institute of Ophthalmology for her work on endothelial progenitor cells in retinal vascular diseases and has published extensively on diabetic macular ischemia.

Please register in advance for this meeting by clicking on this link - <https://us02web.zoom.us/join/zoom/register/tZUkcu6oqTkuGdHnm40vzKlZTyHTJR0IDwqM>

After registering, you will receive a confirmation email containing information about joining the meeting. Should you have any questions, you can send them in advance to carshaltondiabetesgroup@gmail.com. You will be also able to type your questions into the 'chat' during the meeting.

Have you considered participating in a nutritional study?

The study

The aim of the study is to identify foods that produce the most favourable blood glucose profile over the course of the day. This way we can produce a portfolio of suggested food swaps that individuals with Type 2 diabetes can incorporate into their diet to regulate changes in their blood glucose concentrations.

Qualified participants must be between 18-35 years old, be diagnosed with Type 2 Diabetes and have been on the same medication for the past 3 months.

The research is led by Imperial College London.

Contact Nunzia Altieri, Pre- Doctoral Fellowship, Imperial College London.
Jennifer Pugh, PhD student, Imperial College London.

Contacts: nunzia.altieri@nhs.net j.pugh@imperial.ac.uk 07414536967

Next meeting

4th April 2022

7.45pm for an 8pm start)

Speaker: Susanne Sorenson

Title: The Diabetic Eye Screening Programme in Surrey
Plus the AGM

The meeting will be on Zoom. Please contact Brian Davey for details.

